

2010 Premium Members:

Ashforth Pacific, Inc.

www.ashforthpacific.com

Calaroga Terrace (2011)

www.calaroga-terrace.com

PacifiCorp (2011)

www.pacificorp.com

2010 Business Members:

Advantis Credit Union

Doubletree Hotel

Legacy Health Systems

Lloyd Athletic Club

Lloyd Center

Lloyd TMA

LRS Architects

NW Enforcement

Pacific Continental Bank

Pacific Power

Red Lion Hotel – Portland

Residence Inn by Marriott

Rose Quarter/Trailblazers

Temple Baptist Church

Westside Secretarial

2010 Sustaining Members:

Albina Bank

Cascade Floral

Greenfield Health

Johnson Center for Pelvic Health

Oregon Automobile Dealers Assn

Oregon Convention Center

Point West Credit Union

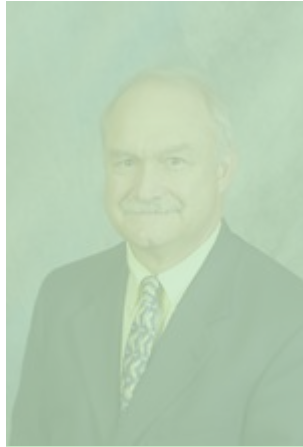
Small Business Mediation

Umpqua Bank

Waddell & Reed

Zama Massage

Economist John Mitchell Tells LDCA Like It Is



- When: Tuesday, January 18, 2011, 11:45 am to 1:15 pm
- Where: Doubletree Hotel, 1000 NE Multnomah St
- Cost: \$15 • RSVP: admin@tsgpdx.com

Portland-based economist John Mitchell is the principal of M & H Economic Consultants of Portland. He is a past chairman of the Oregon Council of Economic Advisors and former chief economist of U.S. Bancorp. He was a doctoral graduate from the Univ. of Oregon and a professor of economics at Boise State University for 13 years before joining U.S. Bancorp in July of 1983. He was Chief Economist of U.S. Bancorp until July of 1998 and served as Economist Western Region for US Bank until July 2007.

SPONSORED BY
PACIFIC POWER
A DIVISION OF PACIFICORP

2011 LDCA Membership

The membership drive for 2011 has just begun. Our two newest 2011 members are **Pacific Power** and **Spirit of 77**.

Pacific Power, a division of PacifiCorp, has reliably provided power to residential and business customers for 100 years. For more information about the company and its history, visit their website: www.pacificpower.net.

Spirit of 77, named after the Portland Trail Blazers 1977 championship win, is a new sports bar in the Rose Quarter. The vintage sports décor and atypical menu set Spirit of 77 apart from the rest. To check out their breakfast, lunch, dinner and happy hour menus, visit their website: www.spiritof77bar.com.

To renew your LDCA membership, log on to: www.lloyddistrict.org.

2010-11 LDCA Board

Chair: Lisa Faust

Pacific Continental Bank

Lisa.Faust@therightbank.com

Tel. 503.350.1205

Vice-Chair: Brian Griffis

Point West Credit Union

BGriffis@pointwestcu.com

Tel. 503.546.5381

Secretary: Mary Ann Gray

Westside Secretarial

maryann@westsidsec.com

Tel. 503.292.8881

Treasurer: Lisa Donaldson

Ashforth Pacific Inc.

ldonaldson@ashforthpacific.com

Tel. 503.872.1010

Members-at-Large:

Carolyn Briggs, Resident

Ann Grimmer, Lloyd Center

Michael Jones, LRS Architects

Elaine Kemp, Resident

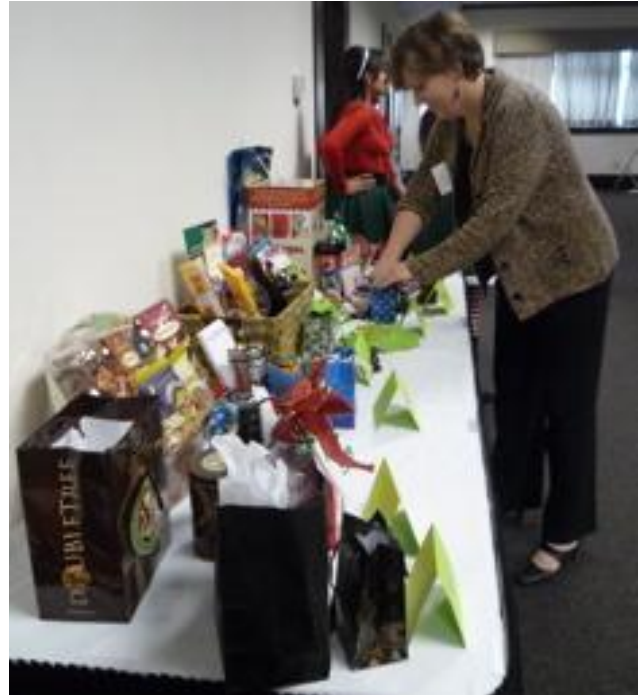
Dana Canary, Resident

Lynne Logue, Rose Quarter

Bill McGrath, Resident

Gary Warren, Calaroga Terrace

Special thanks to 2010 holiday luncheon raffle sponsors! Red Lion Hotel, Courtyard Marriott, Pacific Continental Bank, Lloyd Center, Sonbeam Daycare/Temple Baptist Church and Doubletree. Lucky raffle winners left with gift baskets including overnight hotel stays, chocolate decadence, Visa gift cards, and snacks galore!



The LDCA Board Membership

The Lloyd District Community Association (LDCA) is unusual in that it serves as both the Neighborhood Association and the Business District Association for the area between I-84 and NE Broadway and the Willamette River and NE 16th Avenue.

For both businesses and residents, membership requires attendance at three general meetings or Board meeting during the year between June 1st and May 31st. This attendance allows the business or resident household one vote for the members of the Board at one of the two-part Annual Meetings each year. These meetings are held the last Thursday in May in the evening (LTBD) and the first Thursday of June at noon at the location of June's General Meeting.

LDCA members, friends and guests raise funds through a Bowling & a Golf Tournament to hire professional staff. Our very part-time staff maintain mail, e-mail, and list-serve databases, produces and mails the newsletter, takes & prepares minutes of Board meetings, makes deposits, prepares financial reports, staffs meetings and performs other duties needed by a very busy association,

To that end, the opportunity was created for businesses, property owners and others who care to voluntarily support the work of the LDCA through a financial contribution.

Board Meetings, open to all, are held the 3rd Thursday of the month at noon - 1:30pm at Calaroga Terrace



The Portland Sugarplum Elves spread holiday cheer at December's luncheon.



2011 LDCA Member Events

Mark your calendar, and please plan to join us for the following 2011 LDCA membership events:

- 1/18, Economist John Mitchell, 2011 report
- 2/17, joint meeting with the NE Broadway Business Association, hosted by Pacific Continental Bank and Ambridge Event Center
- 4/7, panel presentation on Health Care Reform and the impact on businesses, with speakers from Governor Kitzhaber's office, USI and Kaiser
- 6/2, sustainability tour of Rose Quarter
- 8/4, vendor showcase, to be held in the Outdoor Plaza of Oregon Convention Center
- 10/13, Second Annual LDCA Health & Wellness Fair
- December 1st, Holiday Celebration



Susan Johnson, MD, of the Johnson Center for Pelvic Health, donates a teddy bear to the charitable drive sponsored by Ashforth Pacific, Inc. Donations are distributed to local children's

2010 Community Awards

The Events Committee hosts activities throughout the year to raise money for the LDCA Community Fund. For 2010, we are happy to announce two \$500 scholarship awards and two \$500 non-profit awards were distributed from this fund.

Four applications for the scholarship award and three applications for the non-profit award were received. We are happy to announce the following winners:

Morgan Johnson: a full time employee at Calaroga Terrace and a full time medical assistant student of Carrington College.

Meaghan Snyder: a part time employee at Calaroga Terrace, attending Portland Community College.

Sonbeam Daycare: a non-profit daycare facility located in the Lloyd District. During the holidays, Sonbeam



Distributes 15-25 food baskets to those in need. This award will directly benefit this effort.

Portland Police Sunshine Division: provides 24-hour emergency food and clothing for people in Portland. Their facility is located near the Lloyd District. This award will help them purchase food for holiday food boxes. They plan on distributing 4,500 food boxes in Portland this holiday season.

Join the Lloyd District Community Association today!

Call 503.774.2832, or download a membership application at: www.LloydDistrict.org

Meet the Marketing Committee...

Marketing Chair, Bridget Bayer, Operator of Business Association Management, has been a member of the LDCA since 2008.

Gary Warren, Executive Director of Calaroga Terrace, has been a Board member for 2 years.

Nancy Chapin, of TSG, formerly The Support Group, has provided administrative support to LDCA since 1999.

Lynne Logue, Director of Human Resources for AEG at the Rose Quarter, was newly elected to the Board this year.

Charlotte Rowe, Property Manager of Ashforth Pacific, has been a member of the LDCA since 2008.

Please join us at our next meeting!



2011 Monthly Meeting Schedule

Check www.LloydDistrict.com for updates.

Board of Directors and Interested Others:

Meets 3rd Thursday at 12:00 Noon at Calaroga Terrace, Terrace Auditorium. Lunch is available for \$5.

Land Use & Transportation:

Meets 3rd Thursday at 12:00 Noon with the Board at Calaroga Terrace, Terrace Auditorium. Lunch is available for \$5.

Event Committee:

Meets 3rd Tuesday at 12:00pm at the Lloyd Mall office

Membership Committee:

Meets 3rd Tuesday at 11:45 a.m. at the Red Lion's 10-2-1 Café, 1021 NE Grand Ave.

Public Safety Meeting:

Meets last Thursday at 8:00 a.m., location varies.
Contact Wayne.Pearson@mcdca.us

Marketing Committee:

Meets 2nd Friday at 11:30 at Calaroga Terrace



P.O. Box 6762
Portland, OR 97228-6762